

Elan Physique Unit

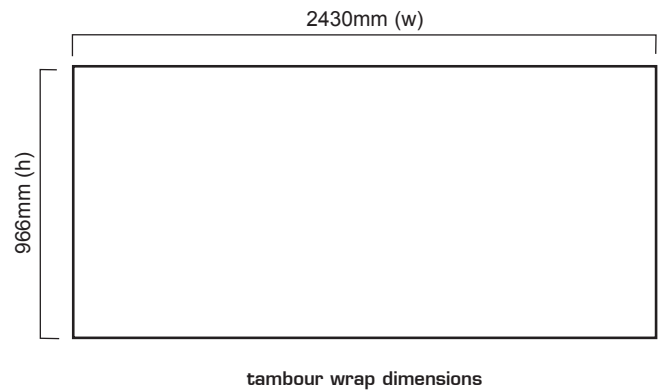
PK 182

Distinctive styling combined with ease of use make the Elan unit an ideal addition to any Exhibition stand.



features & benefits

- Flat pack furniture constructed from composite materials and flexible MDF tambour
- Easy to transport and quick to assemble
- No tools required
- Internal storage area
- Load bearing upto 75kgs approx
- Additional accessories available



hardware specifications

Hardware Dimensions (mm)
1000 (h) x 1000 (w) x 550 (d)

Weight:
18.5kg approx

Carry bag/case Dimensions (mm):
1050 x 650 x 160

wrap specifications

Base Wrap Dimensions (mm):
966 (h) x 2430 (w)

If applying a graphic to the wrap, an allowance should be made to its size to accommodate material type, thickness etc.

additional info

Availability:
Choice of fabric wrap colours.
Laminate colours available in black, beech or rosewood.

Optional accessories:
Carry bags or cases, 50w LV Jack socket lighting, Internal shelving, aperture cutouts.

We are continually improving and modifying our product range and reserve the right to vary the specifications without prior notice. All dimensions and weights quoted are approximate and we accept no responsibility for variance. E&OE.

Assembly Instructions



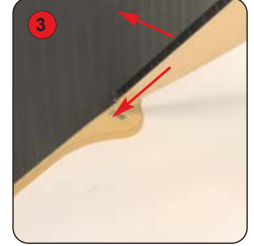
Kit includes: Top, tambour wrap, front 'fin' and base



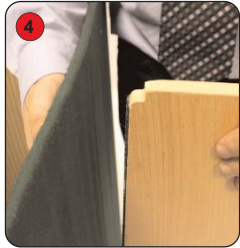
1 Place the base on the floor with the ridging uppermost. Attach the tambour to the base.



2 Make sure that the hook fastener on both the tambour and base fit securely together.



3 Slot the narrow end of the 'fin' into the hole on the front of the base.



4 Push the side of the 'fin' against the tambour wrap to secure the fit.



5 Place the top onto the tambour wrap and secure using the hook fastener.



6 It may be necessary to open some of the wrap to fit the top onto the hook fastener.



Other products in our Physique range include:



Double D

Multi-function popular style workstation.



Single D

Designed to add useful counter space to any display.



Urban

Complete with clear acrylic display shelf.