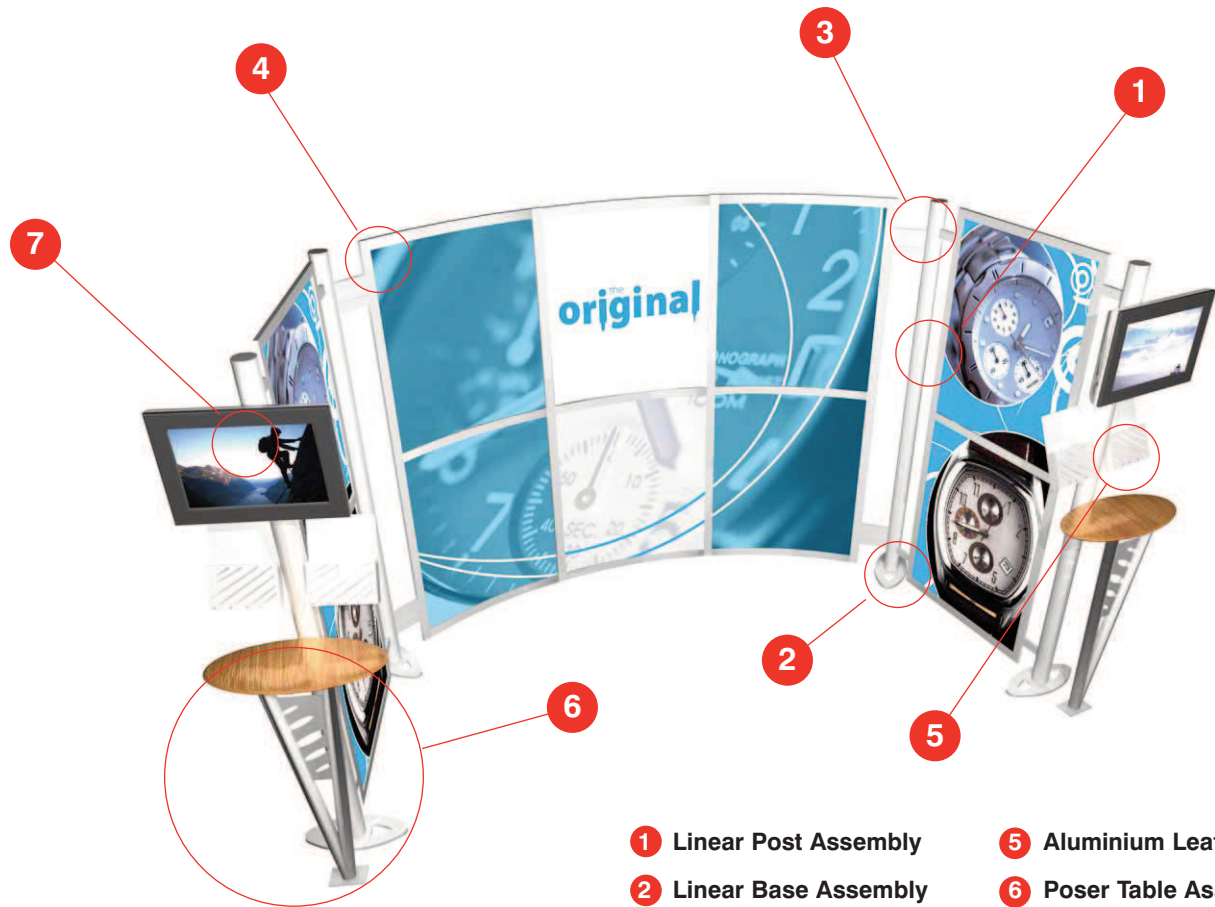


Linear Universal Guide

Linear profiles and accessories can be used to create **custom configurations** to your specifications. Our dedicated design team offers a complementary service that delivers solutions that fit specific functional specifications, **design** requirements and budget.



- 1 Linear Post Assembly**
- 2 Linear Base Assembly**
- 3 Linear Beam Assembly**
- 4 Graphic Fixing Options**
- 5 Aluminium Leaflet Holder**
- 6 Poser Table Assembly**
- 7 LCD Brackets**

Linear Curved Graphic Panel Kit B
 Innovative stylish and robust graphic display that can be customised to any purpose. The perfect way to display your graphics at exhibition and within retail settings.



Linear Graphic and Literature Post

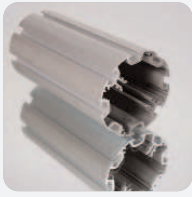
A linear graphic and literature post, great for demonstration and exhibition environments, an ideal solution for displaying information



1 Post Assembly Instructions



75mm Round post



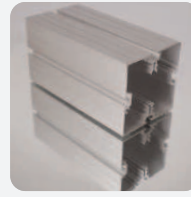
75mm Round post (8 way)



50mm Round post



75mm Oval post



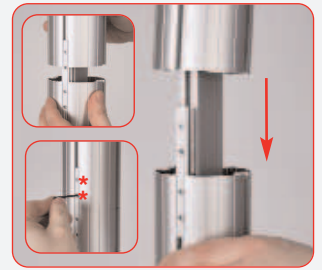
75mm Square post



Female Post



Male post



Align and slide female post over male post, tighten both grub screws using a 2mm allen key. Repeat step for 2nd post.

2 Base Assembly Instructions



Dome base



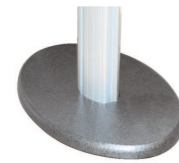
Attach base to male post using M10 bolt and allen key. Ensure clear washer is between base & post.



Oval Base



Attach base to male post using M10 bolt and allen key. Ensure clear washer is between base & post. Repeat step for 2nd post.



Thermoformed base

For directions for the Thermoformed base, please see Oval Base (left)



Adjustable foot



Attach adjustable foot to post. Repeat step for remaining posts.

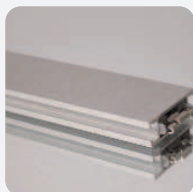


Extra weight for dome base



Place weight in centre of dome base. Place screw through weight and dome base. Screw dome base with round post.

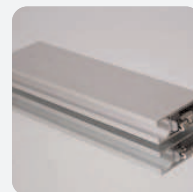
3 Beam Assembly Instructions



45mm Beam



Twin span



40mm Graphic Beam

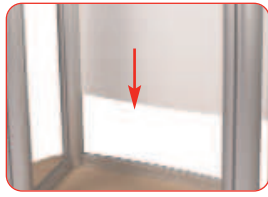


To Attach the Beam, slide the locks into the channel on the upright beam then move to required position and tighten cam locks using an allen key

4 Graphic fixing options



Infill



Slide the front graphic panel into the posts and beam



Slide the top beam over the infill panels



Secure to the posts using a 5mm allen key



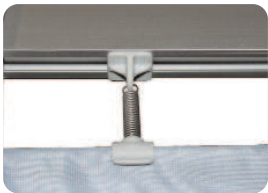
Hemmed Graphic Fixing

Simply allow 160mm to create a double hemmed loop, then slide the graphic over the beam and secure beam by tightening the cam lock with an allen key



Mag Tape

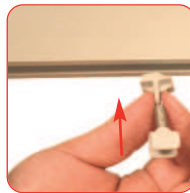
To apply magnetic graphic simply attach the magnetic tape to graphic and fix the graphic to the steel tape on the frame (Steel tape supplied but not fitted)



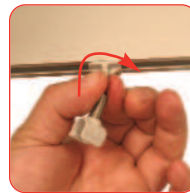
GPR Rod & Spring Fixings



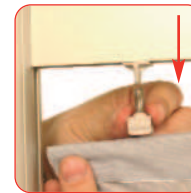
Slide GPR rod into the hemmed fabric



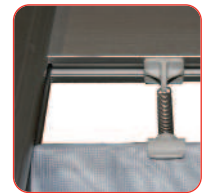
Place spring clip into channel of beam



Twist the spring clip to secure to the beam



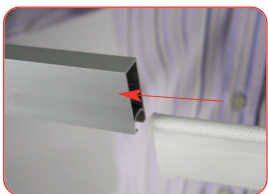
Attach the spring clip to the GPR / fabric graphic



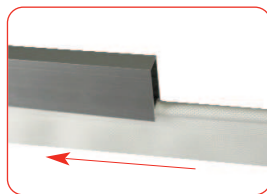
Repeat steps for remaining spring clips



Kadar



To Attach the graphic, Slide the Kadar rod into the 40mm beam



Continue to do so until the graphic is in the required position



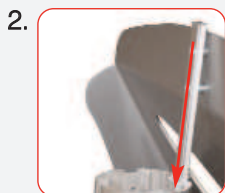
Once the beam is in place lock using the cam lock on the 40mm beam

5 Aluminium leaflet holder

Top Fixing



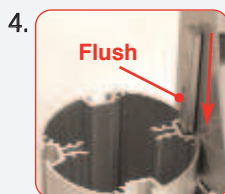
1. Screw flat bar through top of literature holder loosely.



2. Slide bar down through channel in post.

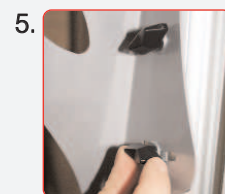


3. Tighten into position with an allen Key.



4.

Flush



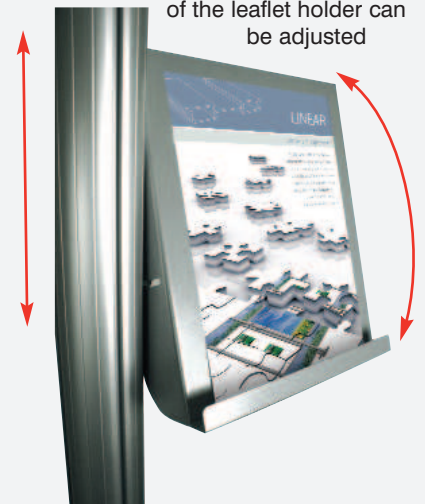
5.



6.

Attach leaflet holder to the post. Slide flat bar of holder into the channel of linear post. Ensure thumb fastener threads are flush to the flat bar. Position and angle holder to suit, tighten both thumb fasteners to secure the holder to the post.

Vertical position and angle of the leaflet holder can be adjusted



6 Graphic fixing options



Fix each of the two legs to the poser table top with the thumb screws.



Slot the cover panel between the two legs. Tension can be adjusted by moving the stops fitted to the legs



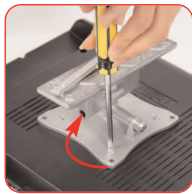
PS-1000



PS1000 lights can be fitted to the 45mm graphics rail using the **US-LINEAR** lighting bracket. Simply hook the US-Linear fitting into the Graphic rail.

7 LCD Brackets

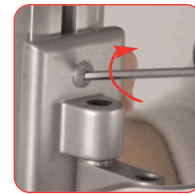
Small LCD Bracket



To attach the screen, align screw fixings with holes on rear of LCD screen. Fix LCD bracket in place with screws provided.

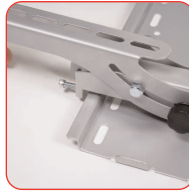
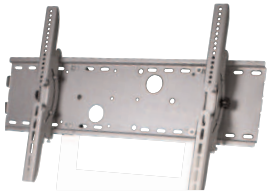


Slide the LCD bracket into the channel. Move to the required position.



Once in position, tighten with an allen key until secure.

Large LCD bracket



Attach LCD brackets to LCD bracket backboard.



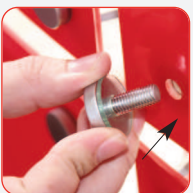
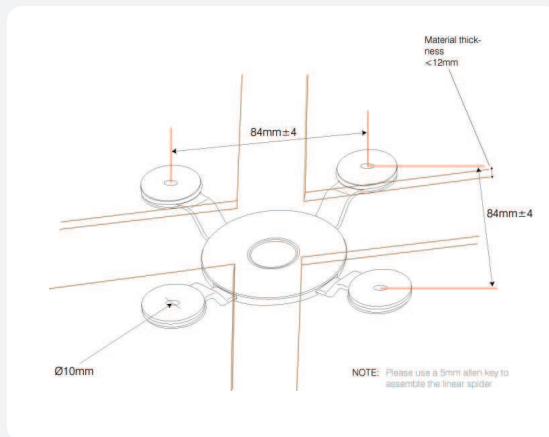
Attach LCD mount to round posts with M6 x 70mm screws, flat washers, spring washers and thumb wheels.

(Alternative fixing method using beams not shown)

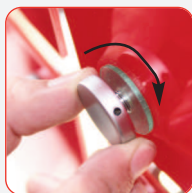
Compass



Unscrew the end of each leg and attach the compass to the linear post

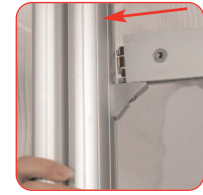


Position the hole on you graphic with the compass and align the top screw



Simply screw the top of the compass back into the compass arm making sure the graphic is secure

Corner reinforcer



Slide the corner reinforcer into the channel to the required position and tighten using the allen key.



Slide the horizontal beam onto the top of the corner reinforcer. Tighten into place.