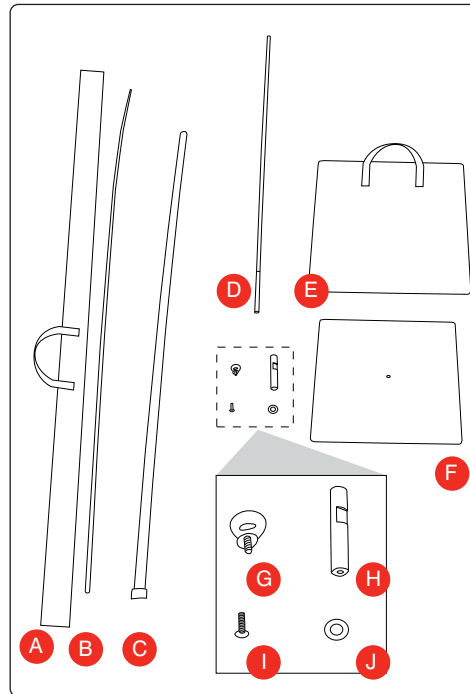
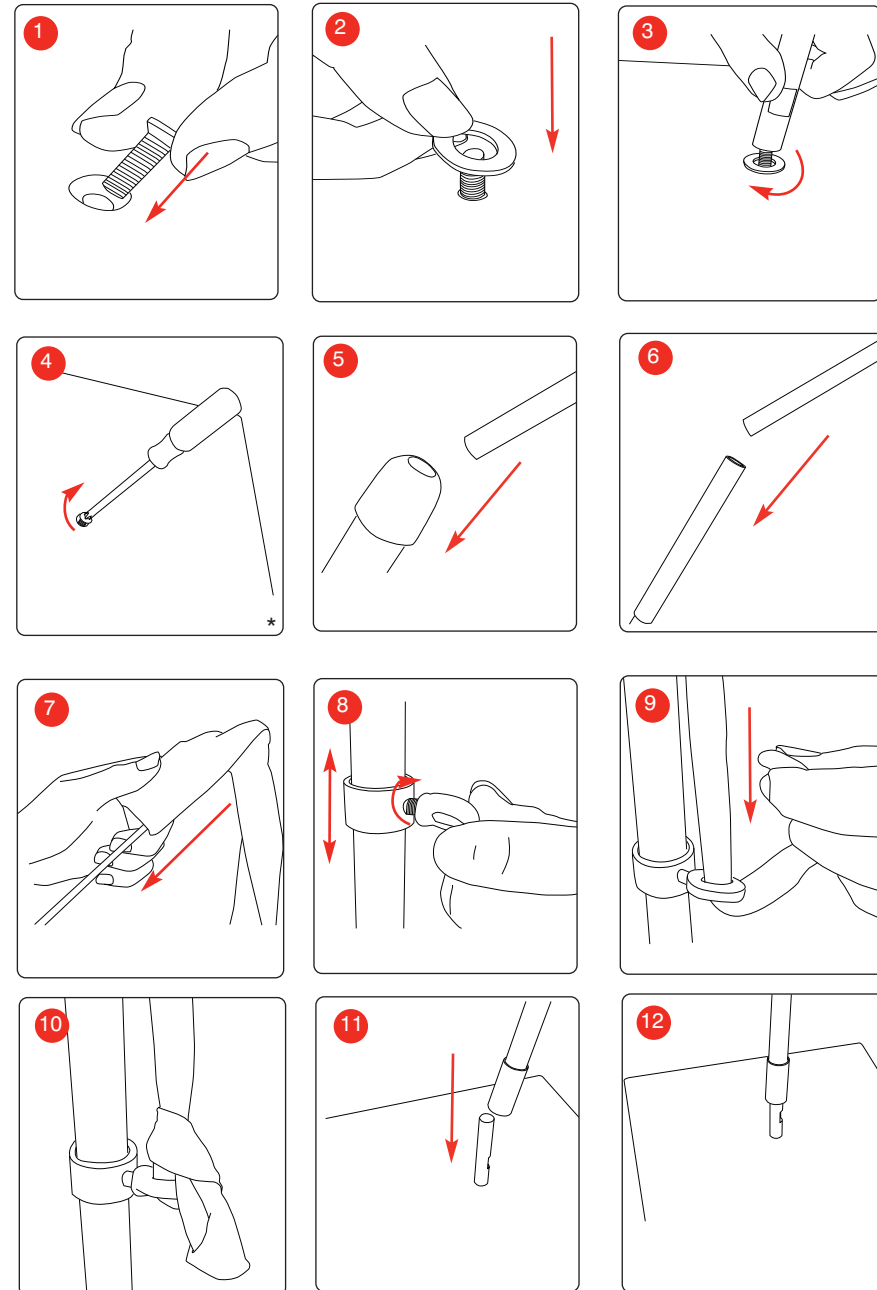




1800mm or 2500mm



- A) Pole bag B) Top pole section C) Base pole section
- D) Flag extension (use for 2500mm)
- E) Base bag F) Base G) Thumb screw
- H) Base to pole fixing J) Base screw J) Washer
- \* Screwdriver not included



Hardware specifications

Assembled dimensions:  
 1800mm (h) using two poles.  
 2500mm (h) using three poles.

Graphic specifications

Please refer to Graphic template