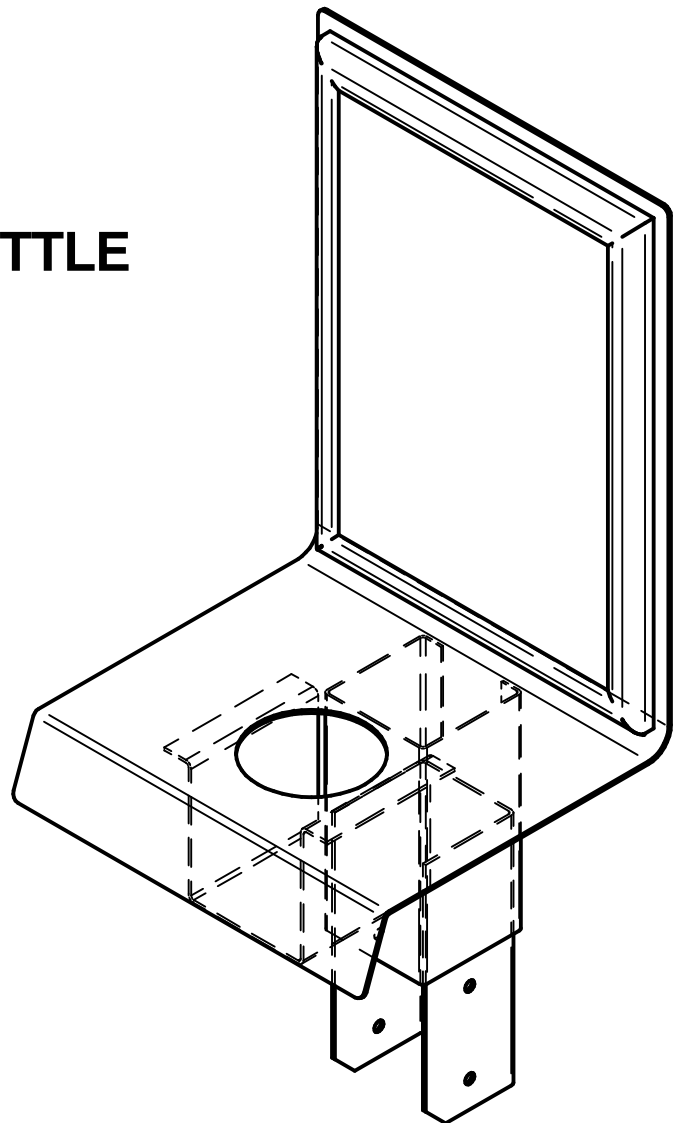
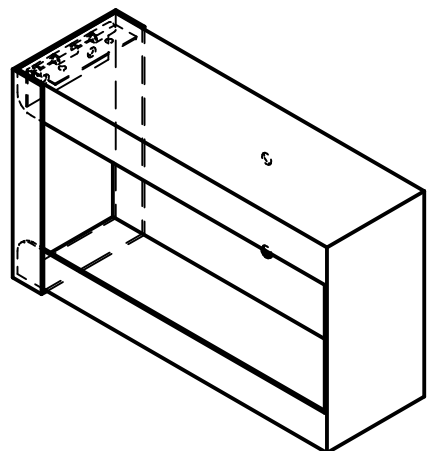


SANITISER & SURFACE STATION DISPLAY ASSEMBLY INSTRUCTIONS

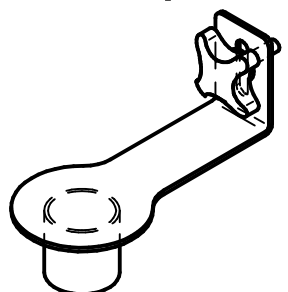
SPIGOTED SANITISER BOTTLE DISPENSER ASSEMBLY



HORIZ. GLOVE BOX DISPENSER ASSEMBLY (SIDE HINGED LID)

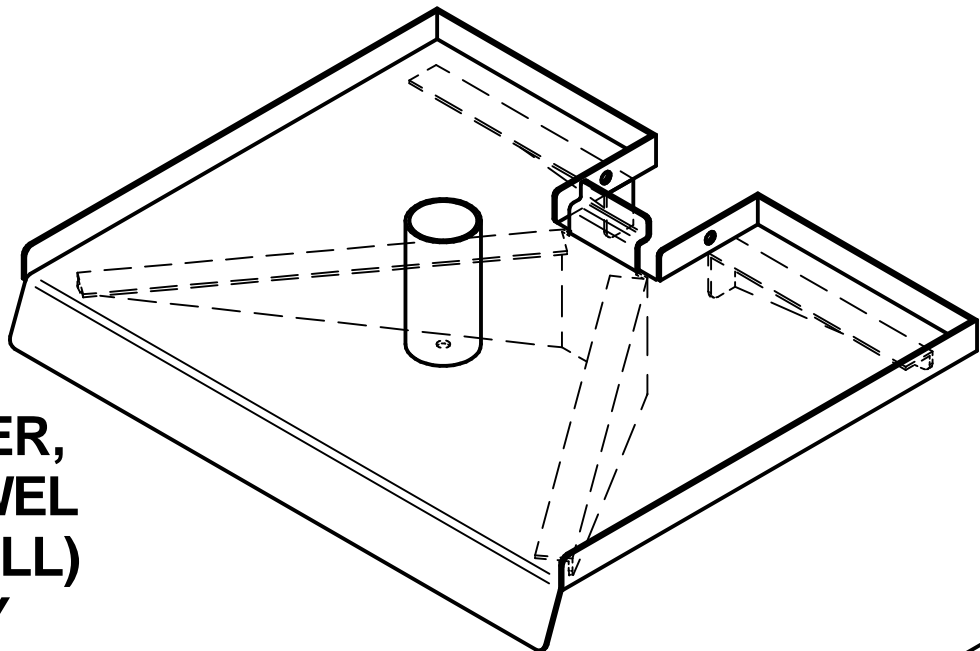


PAPER HAND TOWEL LOCKING BRACKET (incl. lobed hand screw knob)



(2 x M5 SCREWS)

SURFACE CLEANER, PAPER HAND TOWEL (CENTREFEED ROLL) SHELF ASSEMBLY

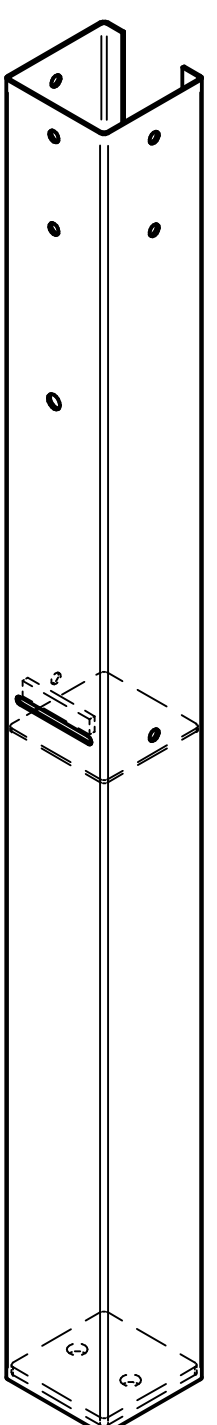


(1 x M5 SCREW)

(4 x M5 SCREWS)

(2 x M5 SCREWS)

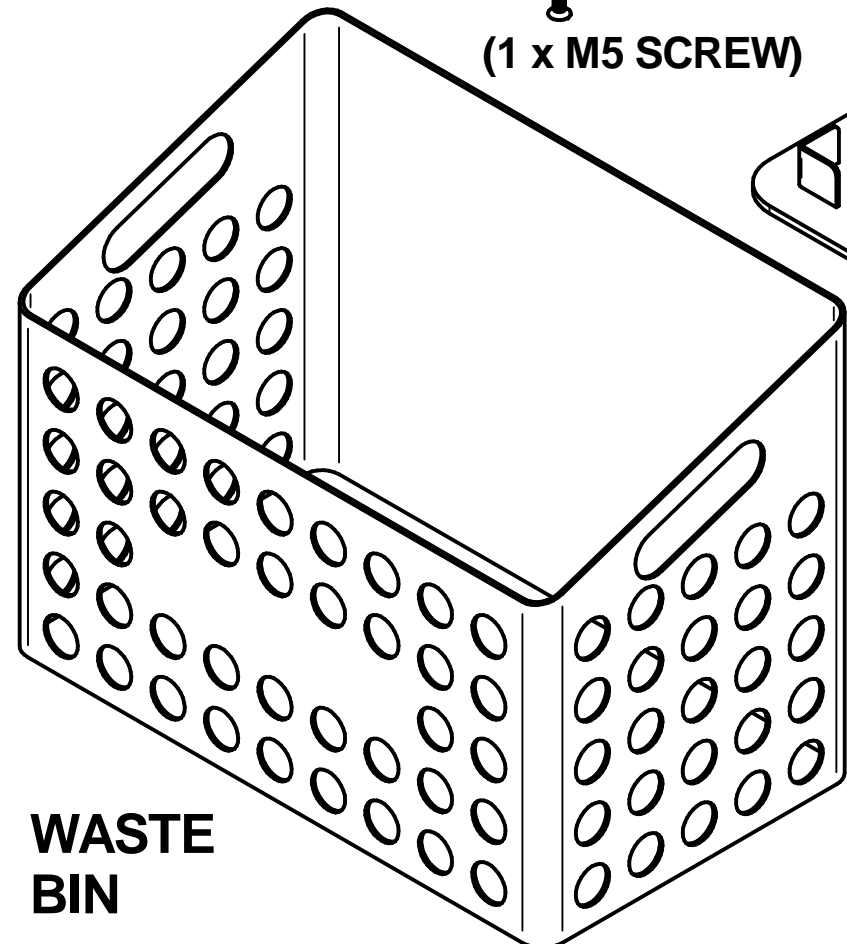
UPRIGHT SQUARE POST ASSEMBLY



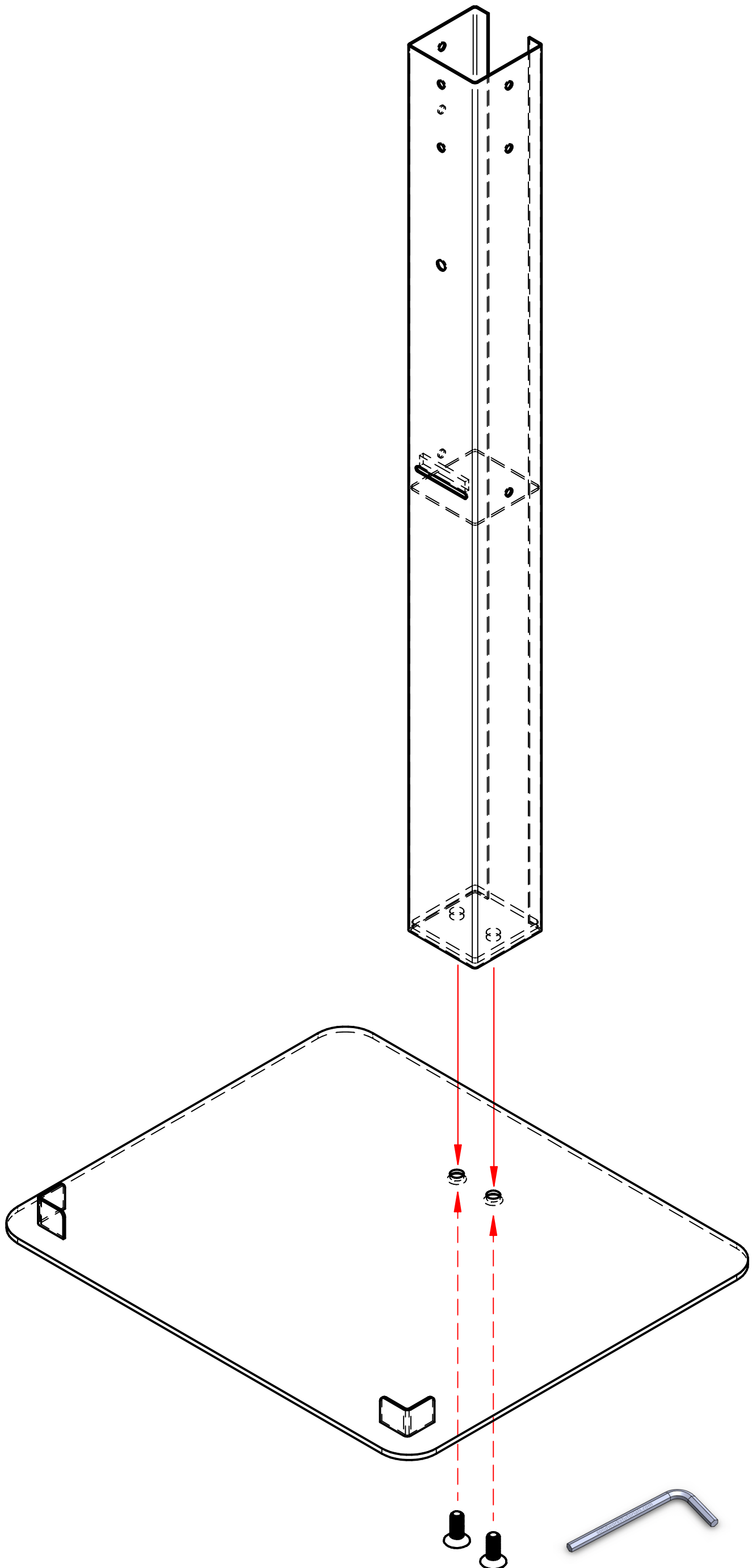
RECT. BASE

(2 x M8 SCREWS)

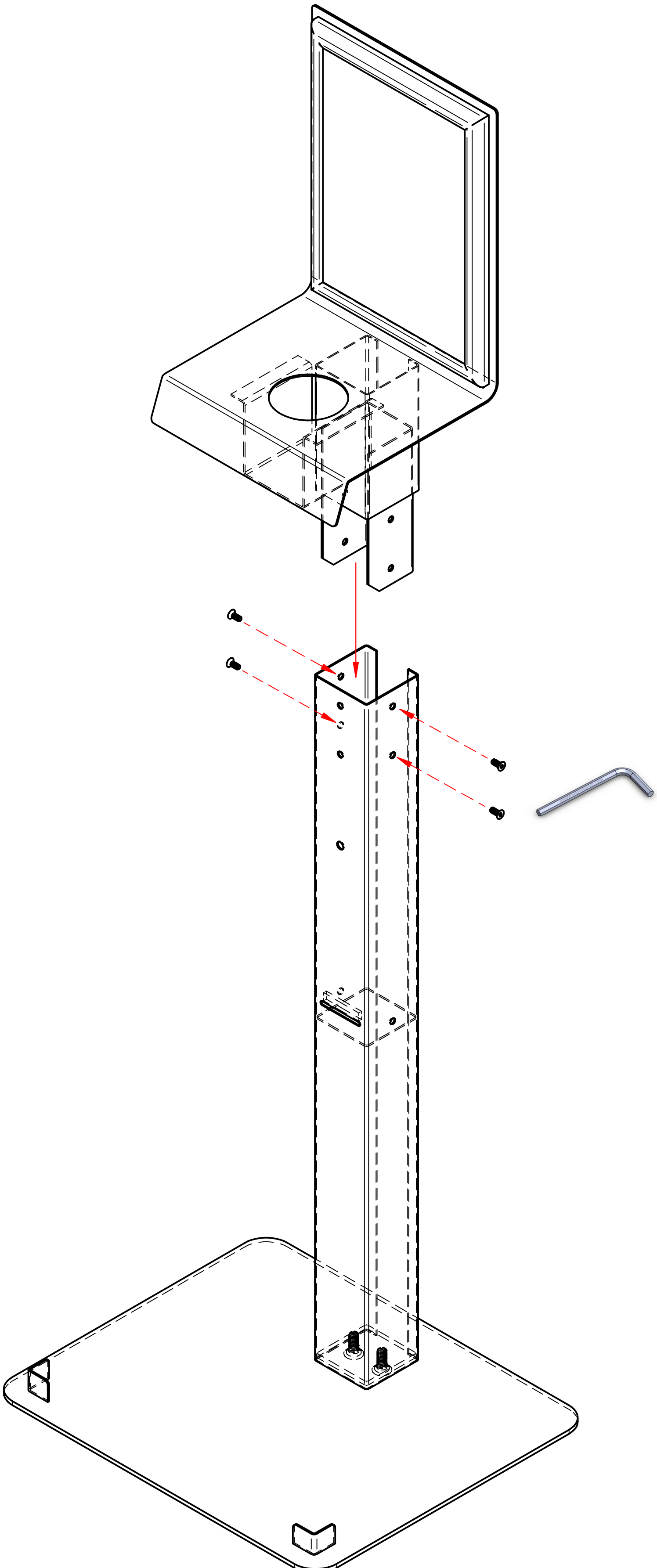
WASTE BIN



KIT SUPPLIED INCLUDES THE ABOVE 7 PRE-ASSEMBLED COMPONENTS WITH
 9 x M5 SCREWS
 2 x M8 SCREWS
 1 x LOBED HAND SCREW KNOB (M8 THREADED STUD)
 2 x ALLEN KEYS

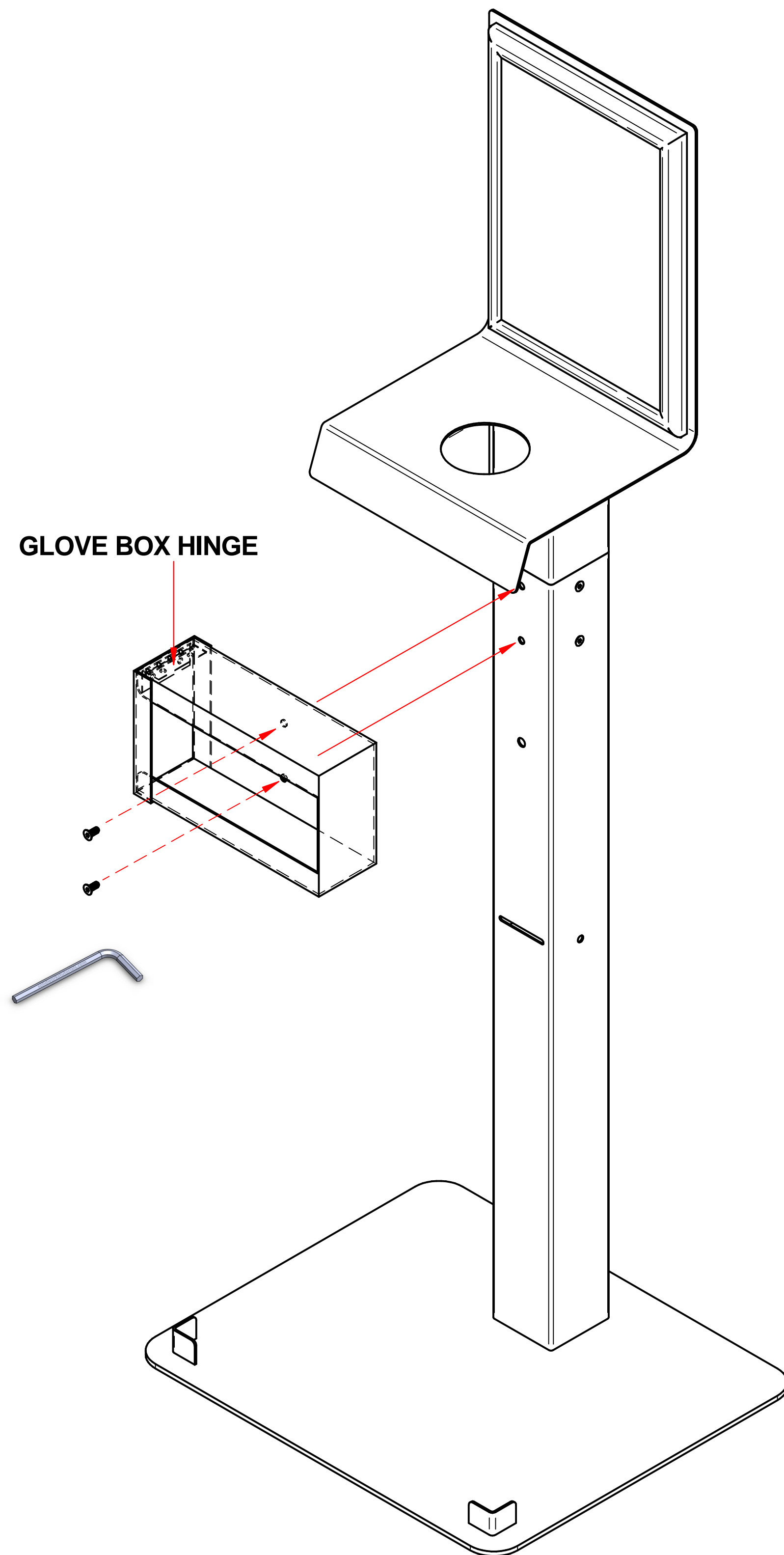


STEP 1:
 CAREFULLY LOWER THE UPRIGHT POST ONTO TOP OF BASE BY ALIGNING/LOCATING THE CORRESPONDING 2 HOLES OF EACH COMPONENT. ONCE THE POST IS CORRECTLY LOCATED IN POSITION, INSERT THE 2 x M8 SCREWS PROVIDED & SECURE TIGHTLY FROM UNDER THE BASE.

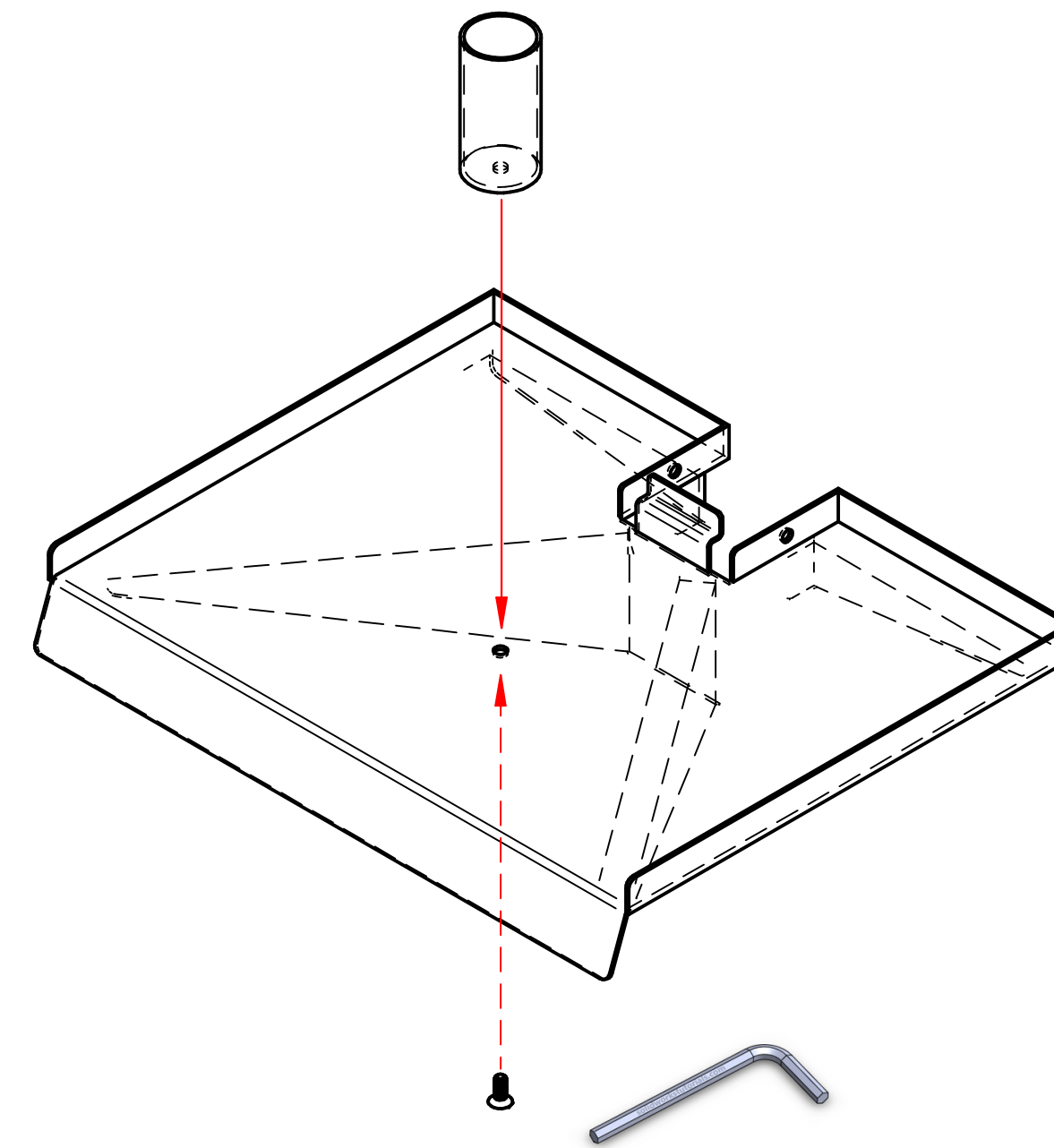


STEP 2:
 CAREFULLY SLIDE DOWN THE TOP SPIGOTED SANITISER BOTTLE DISPENSER ASSEMBLY INTO TOP OPENING OF UPRIGHT POST. ONCE THE TOP DISPENSER IS CORRECTLY LOCATED IN POSITION, INSERT THE 4 x M5 SCREWS PROVIDED & SECURE TIGHTLY FROM THE SIDES. (2 FIXING POINTS EITHER SIDE)

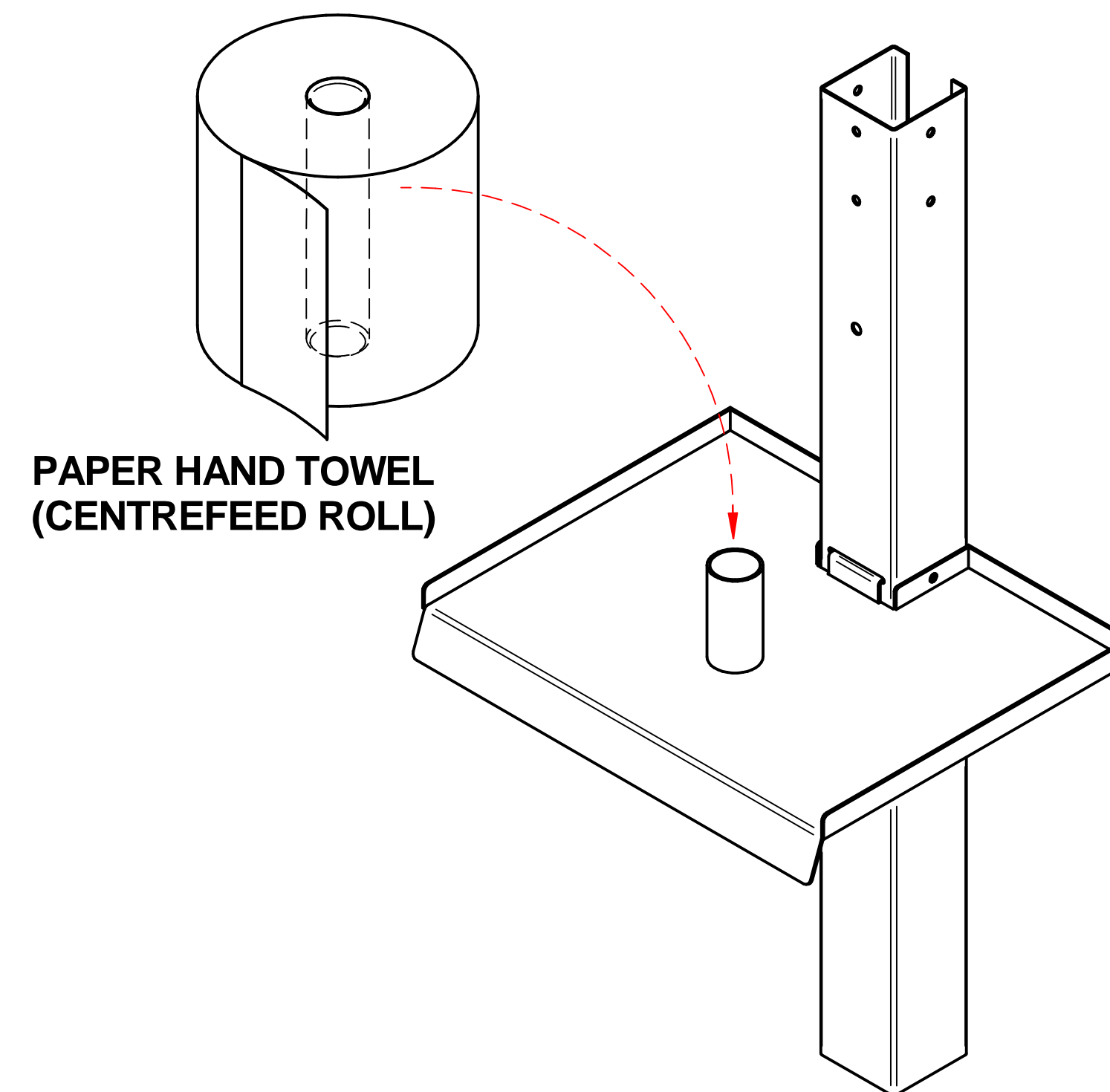
SANITISER & SURFACE STATION DISPLAY ASSEMBLY INSTRUCTIONS



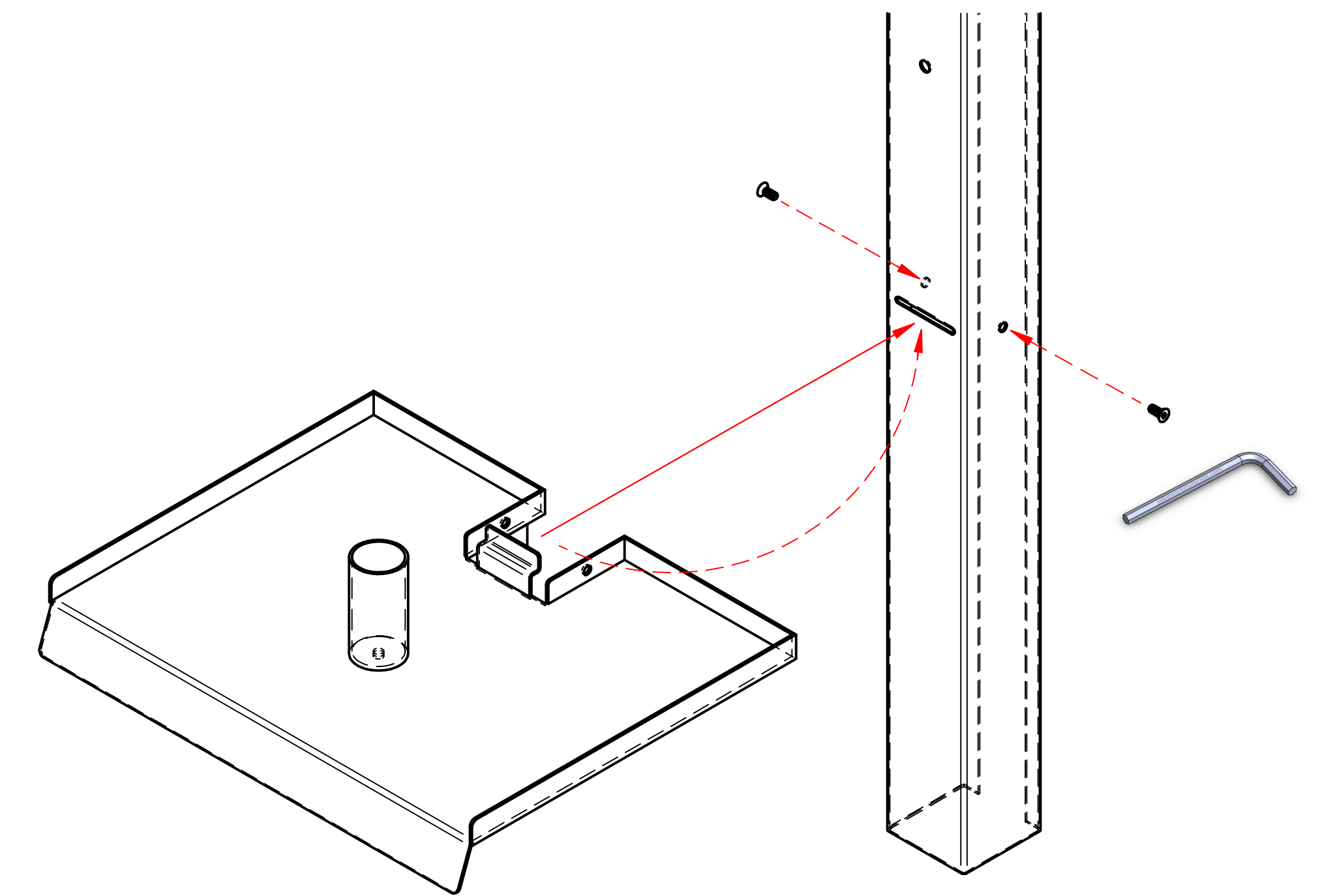
STEP 3:
 CAREFULLY LOCATE THE HORIZ. GLOVE BOX DISPENSER ASSEMBLY TO FRONT FACE OF UPRIGHT POST USING THE TOP 2 FRONT CORRESPONDING HOLES.
 (ALLOW THE HINGED LID TO SIT ON TOP LHS)
 ONCE THE GLOVE BOX DISPENSER IS CORRECTLY LOCATED IN POSITION, VIA THE FRONT OPENING, INSERT THE 2 x M5 SCREWS PROVIDED & SECURE TIGHTLY.



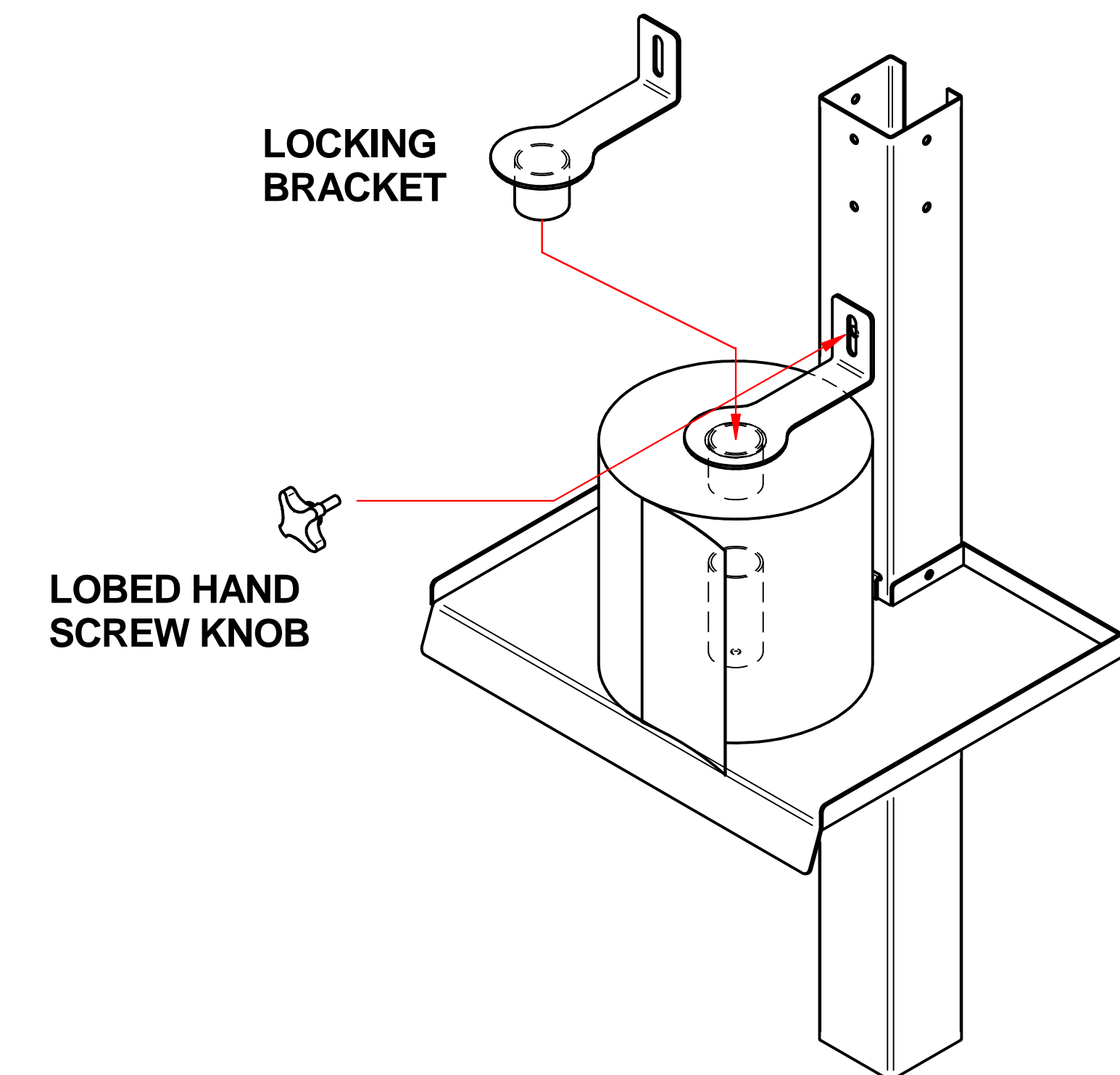
STEP 4:
 CAREFULLY PLACE THE SHELF LOCATION TUBE (FOR THE PAPER HAND TOWEL ROLL) ONTO THE TOP OF THE SHELF BY ALIGNING THE CORRESPONDING HOLES OF EACH COMPONENT.
 ONCE CORRECTLY LOCATED IN POSITION, INSERT 1 x M5 SCREW PROVIDED & SECURE TIGHTLY FROM UNDER THE SHELF.



STEP 5A:
 CAREFULLY LOCATE/SLIDE THE PAPER HAND TOWEL ROLL OVER THE SHELF LOCATION TUBE ON TOP OF SHELF.
 ONCE IN POSITION FOLLOW STEP 6.

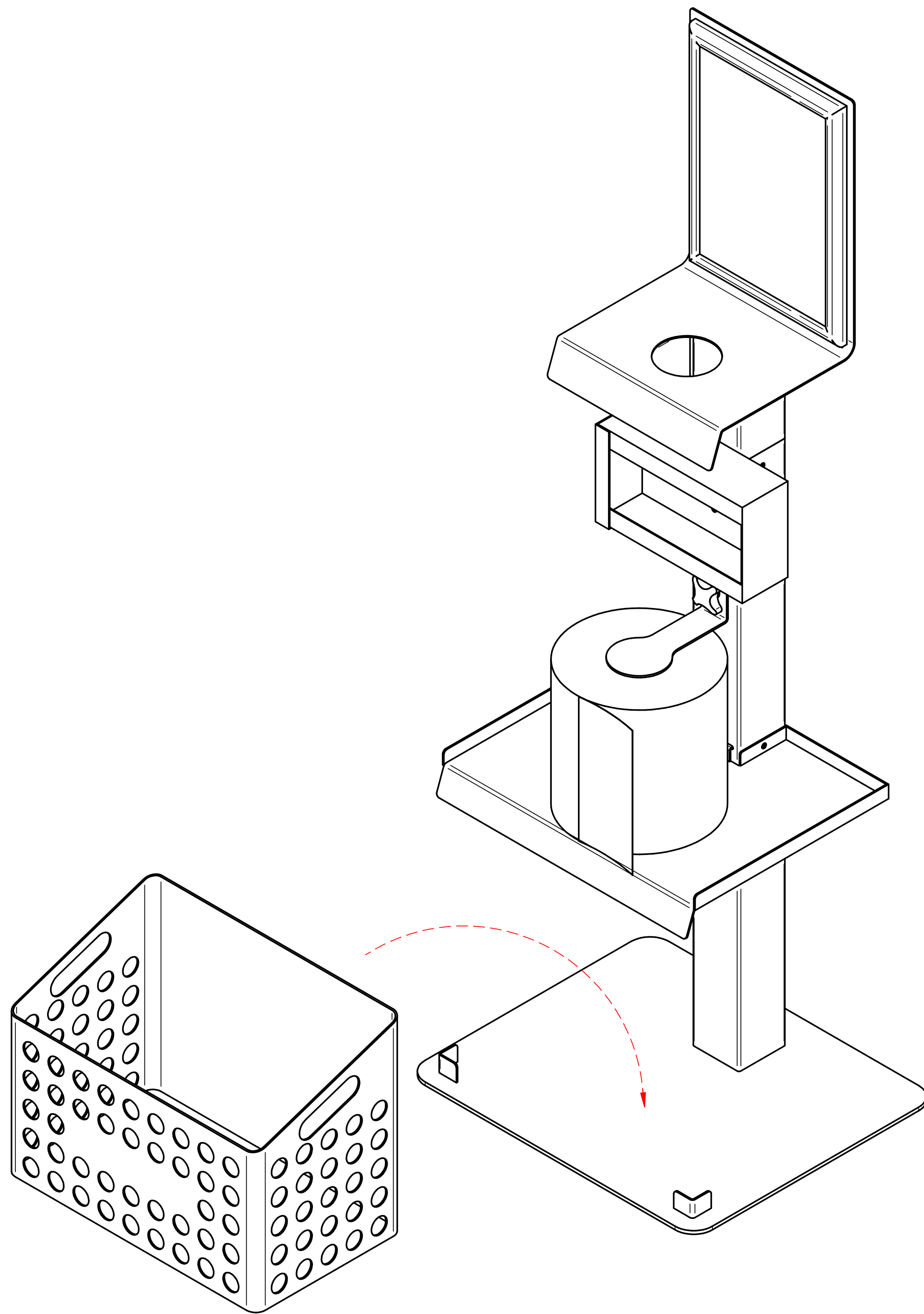


STEP 5:
 SLIGHTLY ANGLE/TILT THE SHELF UPWARDS & LOCATE BY ROLLING INTO POSITION THRU THE FRONT SLOT CUT-OUT ON THE UPRIGHT POST.
 ONCE CORRECTLY LOCATED IN POSITION, INSERT 2 x M5 SCREWS PROVIDED & SECURE TIGHTLY FROM THE SIDES.
 (2 FIXING POINTS EITHER SIDE)

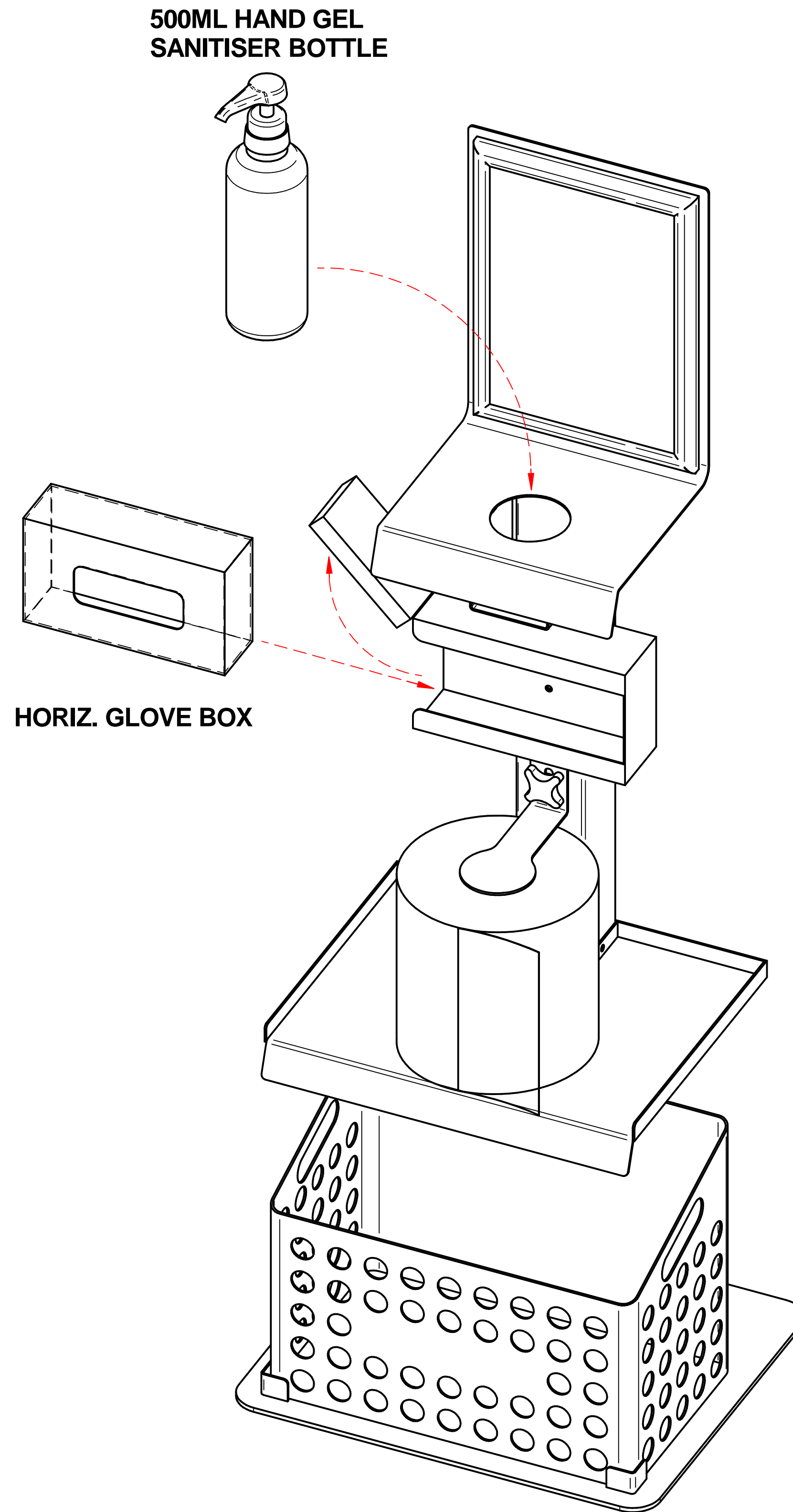


STEP 6:
 CAREFULLY LOCATE/SLIDE DOWN THE LOCKING BRACKET INTO THE TOP OPENING OF THE PAPER HAND TOWEL ROLL.
 ONCE IN POSITION, ALIGN THE SLOT ON THE BRACKET TO THE FIXING POINT ON THE UPRIGHT POST, THEN LOCK/SECURE IN POSITION BY USING THE LOBED HAND SCREW KNOB.

SANITISER & SURFACE STATION DISPLAY ASSEMBLY INSTRUCTIONS



STEP 7:
CAREFULLY LIFT THE WASTE BIN & PLACE IT ON TOP OF BASE.
LOCATE IN POSITION BETWEEN THE UPRIGHT POST & THE 2 BASE TABS.



500ML HAND GEL
SANITISER BOTTLE

HORIZ. GLOVE BOX

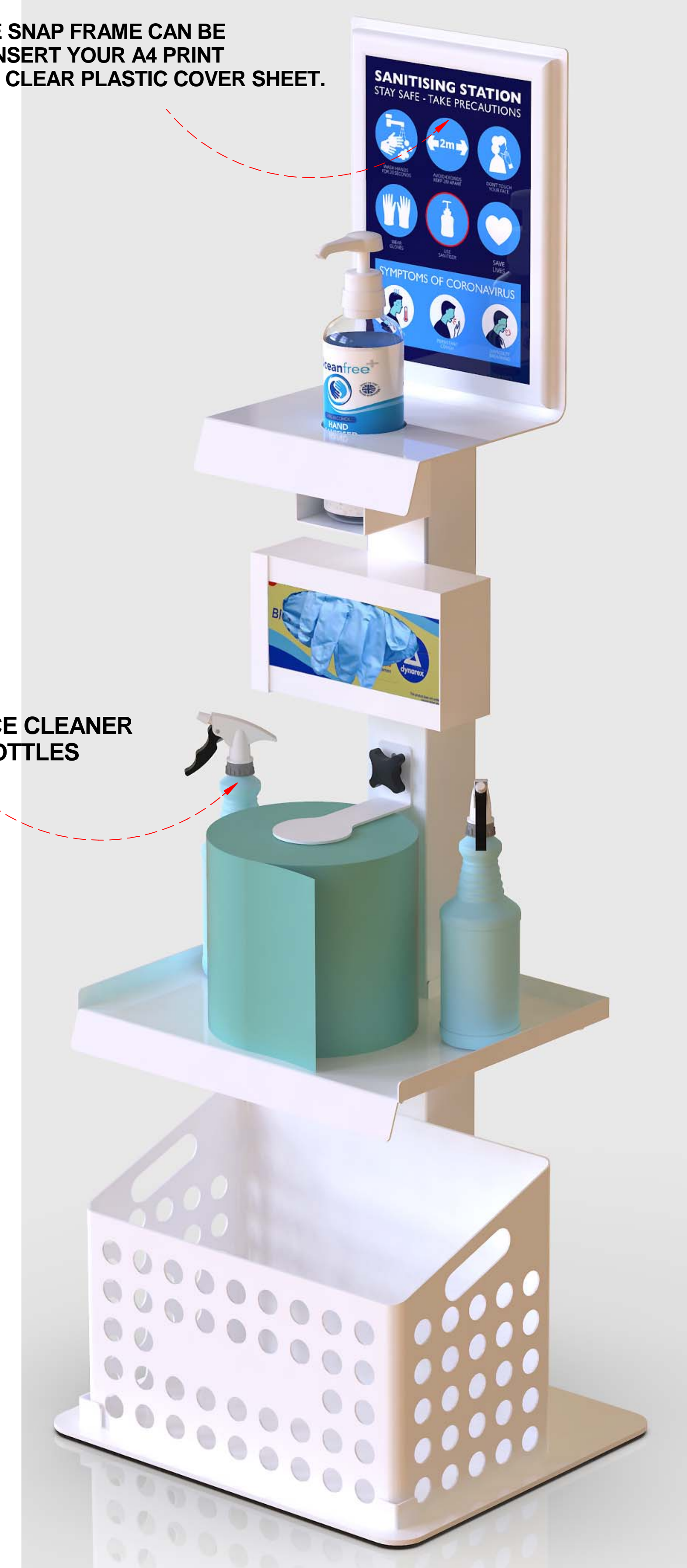
PRODUCT LOADING:
CAREFULLY LOCATE/SLIDE THE 500ML HAND GEL SANITISER
BOTTLE VIA THE TOP CUT-OUT HOLE AS SHOWN ABOVE.

RAISE THE GLOVE BOX DISPENSER HINGED LID (LOCATED LHS)
& CAREFULLY SLIDE IN THE GLOVE BOX AS SHOWN ABOVE.
(ALLOW THE FRONT OPENING OF THE
GLOVE BOX TO FACE OUTWARDS)

A4 UPDATABLE POSTER FRAME:

THE 4 SIDES OF THE SNAP FRAME CAN BE
FLIPPED OPEN TO INSERT YOUR A4 PRINT
BEHIND A FLEXIBLE CLEAR PLASTIC COVER SHEET.

2 SURFACE CLEANER
SPRAY BOTTLES



FINISHED DISPLAY UNIT