

Linear Straight Wire Panel Kit

Provides a high quality and cost effective solution for displaying literature. This attractive unobtrusive stand is ideal for travel and estate agents display



A4 literature holders

features & benefits

- Portable, easy assembly
- Anodised aluminium construction
- 75mm round modular post system as standard
- Steel oval bases supplied as standard
- Supplied with A4 acrylic literature holders
- Available in 3 different sizes

Recommended accessories:



Linear standard shelf - **LN130**



LED Flood light **PS1050**
Requires **US-LINEAR** light bracket



Acrylic stacks **LN602-LCA**



Linear literature holder **LN112**

hardware specifications

Hardware dimensions (mm):

LK022-B - 2000 (h) x 750 (w) x 400 (d) supplied with x3 A4 acrylic literature holders

LK022-C - 2000 (h) x 1250 (w) x 400 (d) supplied with x6 A4 acrylic literature holders

LK022-D - 2000 (h) x 2250 (w) x 400 (d) supplied with x12 A4 acrylic literature holders

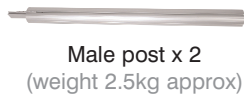
Graphic specifications

Graphic dimensions (mm):

297 (h) x 210 (w) visible approx (A4 Portrait holders)

Assembly Instructions

Linear straight wire panel kit includes:



A4 acrylic literature holders x 6
(weight 2kg approx)



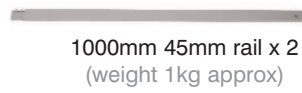
Adjustable wire kit (x4)
(weight 0.5kg approx)



Allen key set



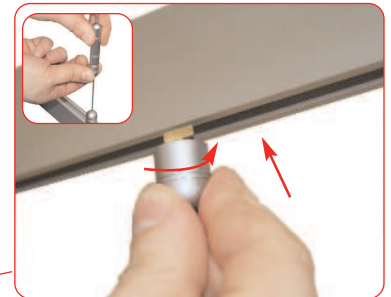
PVC clear washer x 2



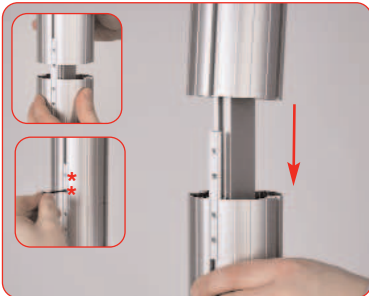
Please note the above kits is based on LK022-C



Secure top rail to post by tightening the lock using a 5mm allen key. Repeat step for 2nd post and bottom rail.



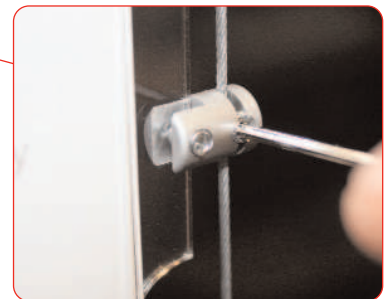
Attach wire kit to top and bottom rails. Fit the diamond shaped insert into the rail and tighten until secure. If required tension can be added to the wire by rotating the adjuster. Repeat step for remaining wires.



Align and slide female post over male post, tighten both grub screws using a 2.5mm allen key. Repeat step for 2nd post.



Attach base to male post using M10 bolt and allen key. Ensure clear washer is between base & post. Repeat step for 2nd post.



Attach acrylic dispenser to wire. Remove grub screw from poster support using a 2.5mm Allen key. Slide poster support onto wire and re-fix grub screw to secure. Repeat step for remaining poster supports.