

# Formulate Monolith Eco 800 mm & 1000 mm

Sep 2018



**PARTS (NOT TO SCALE)**

**Horizontal Top Pole Section (x1)** 4

**Vertical Pole Sections (x2)** 7

**Horizontal Base Pole Section (x1)** 10

**Radius Top Corner Sections (x2)** 5, 4, 3, 7

**Base Corner Sections (x2)** 8, 1, 2, 10

**Centre Pole (x1)**

**Feet (x2)**

**Screws (x2)**

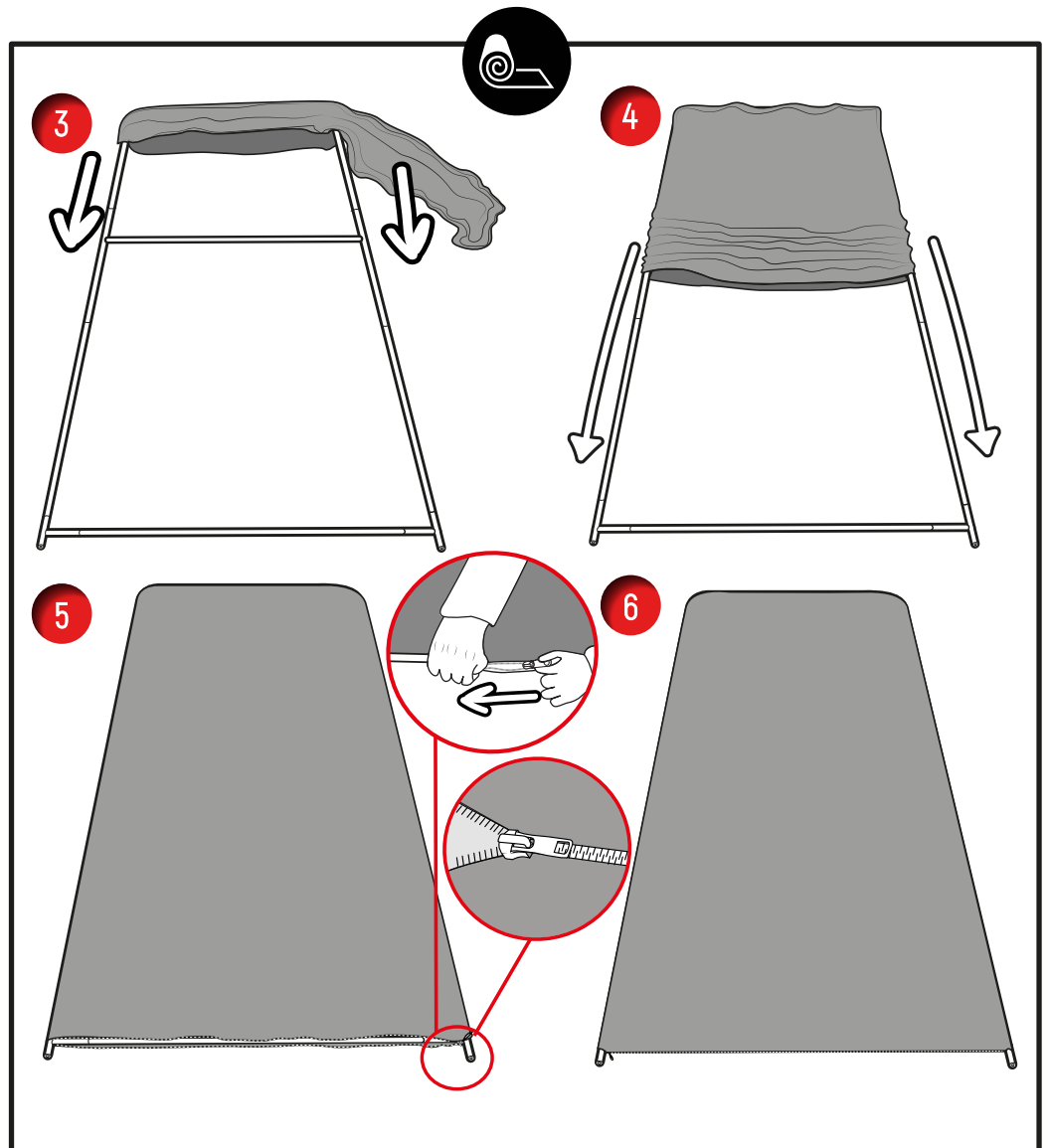
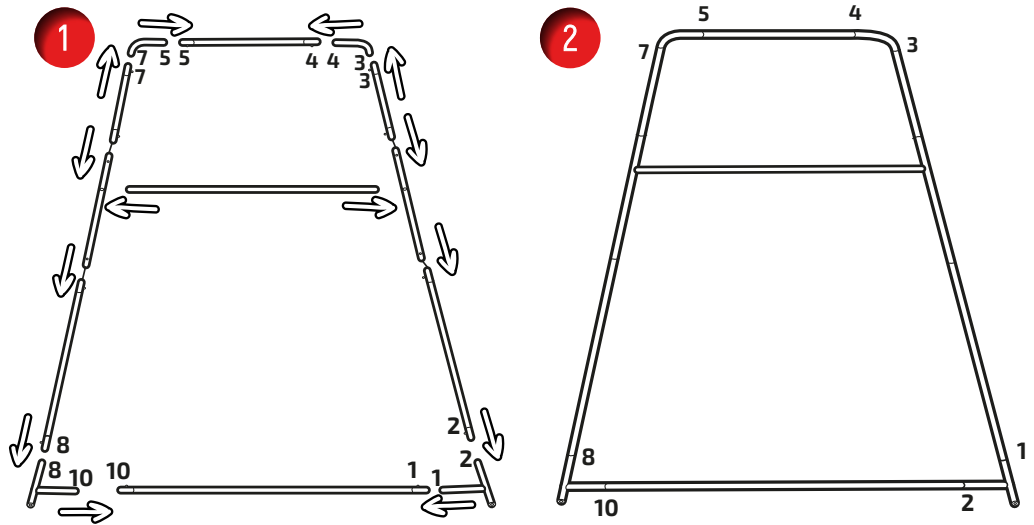
**Washers (x2)**

**Allen Key (x1)** 5mm

**TOOLS REQUIRED (Included with the kit)**

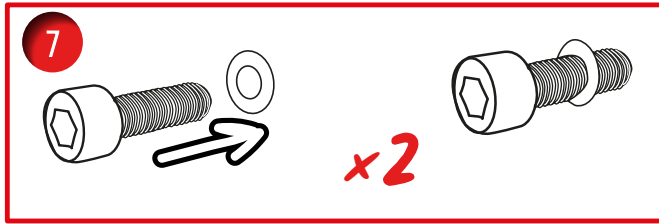
5mm Allen Key

**FOR ATTENTION**

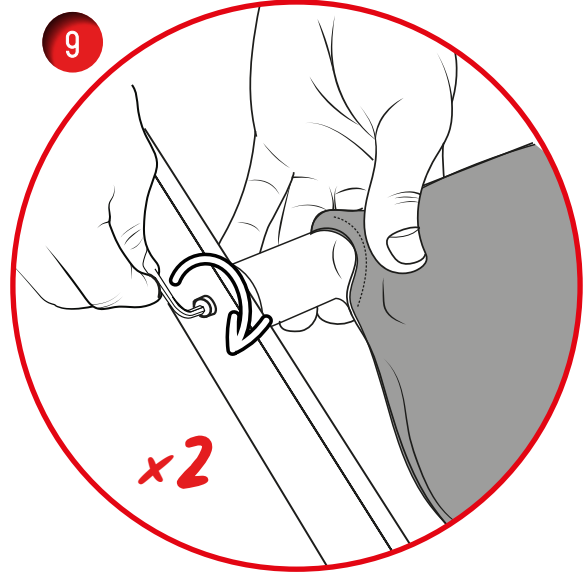
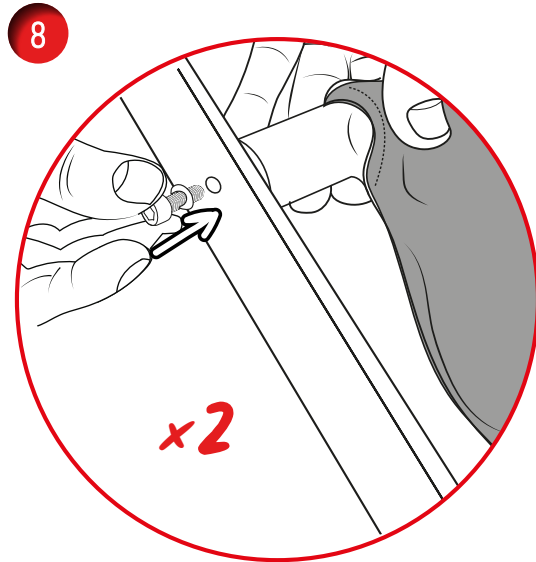


# Formulate Monolith Eco 800 mm & 1000 mm

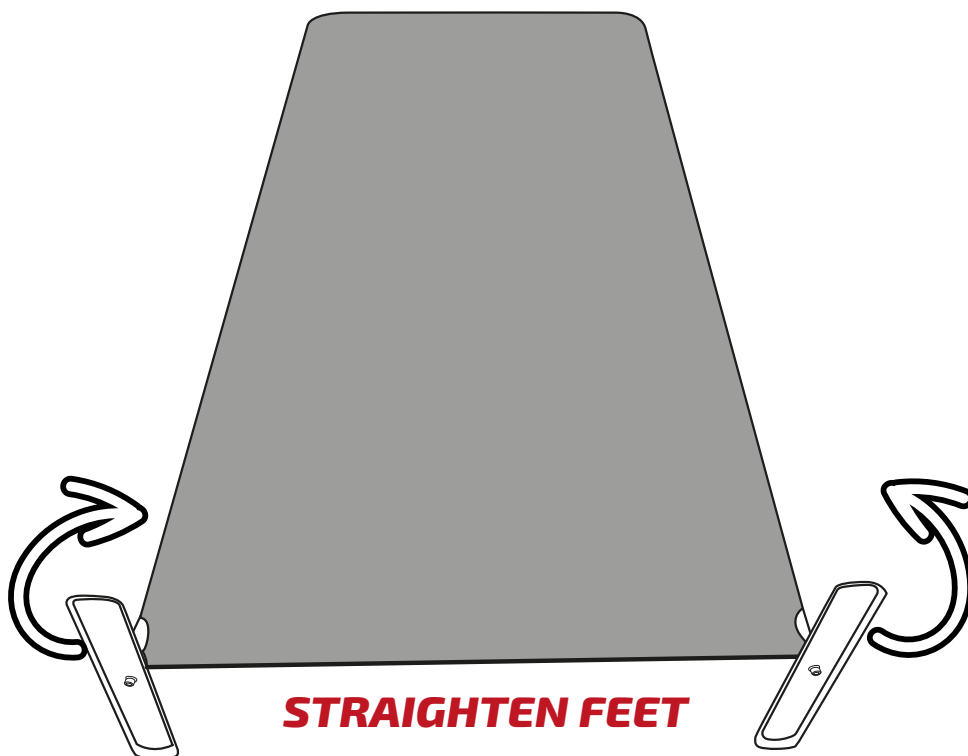
Sep 2018



**TIGHTEN**

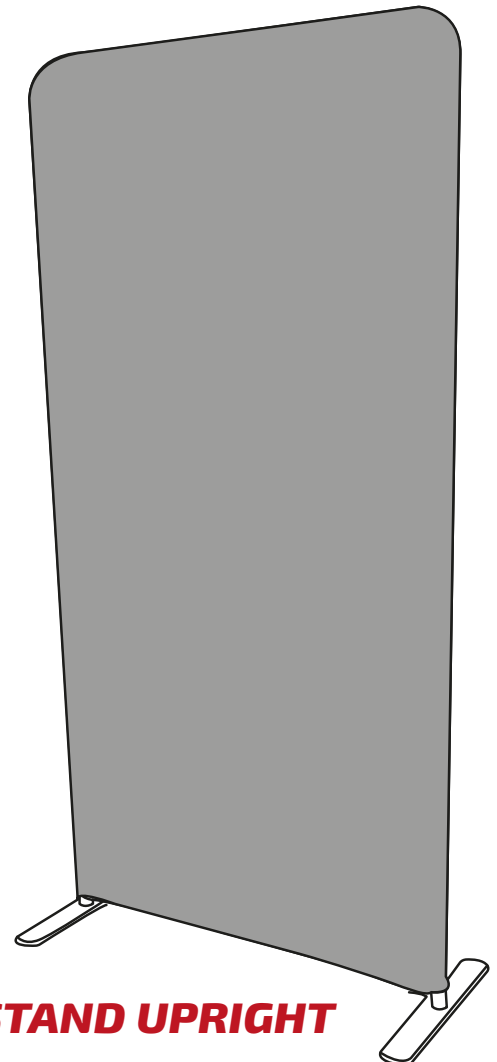


10



**STRAIGHTEN FEET**

11



**STAND UPRIGHT**