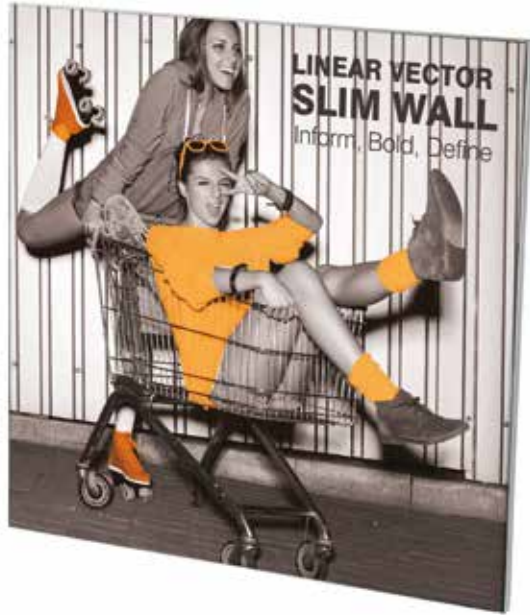
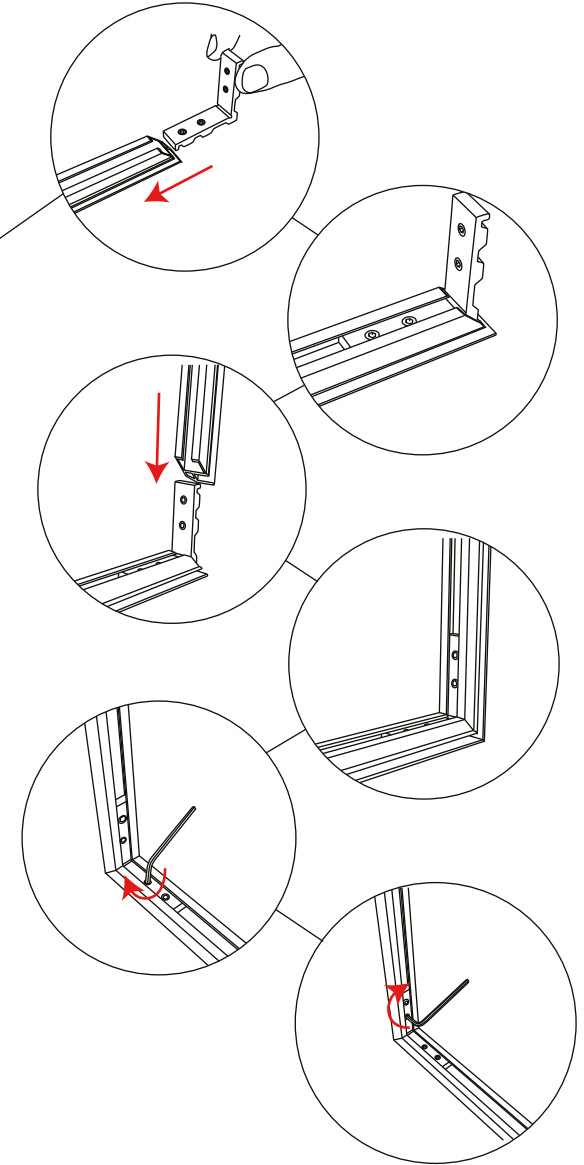
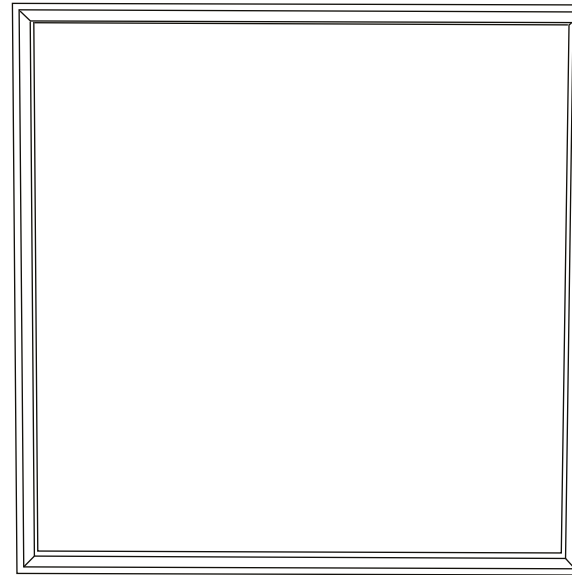


Vector Wall Standard Frame



1



Hardware Dimensions(mm):

250(h) x 250(w) x 20(d)
420(h) x 594(w) x 20(d)
500(h) x 500(w) x 20(d)
594(h) x 841(w) x 20(d)
750(h) x 750(w) x 20(d)
707(h) x 1000(w) x 20(d)
841(h) x 1189(w) x 20(d)
1000(h) x 1000(w) x 20(d)
1000(h) x 1414(w) x 20(d)
1189(h) x 1682(w) x 20(d)

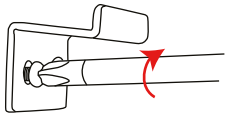
Visible Graphic Size(mm):

247(h) x 247(w)
417(h) x 591(w)
497(h) x 497(w)
591(h) x 838(w)
747(h) x 747(w)
704(h) x 997(w)
838(h) x 1186(w)
997(h) x 997(w)
997(h) x 1411(w)
1186(h) x 1679(w)

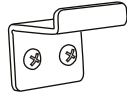
Vector Wall Standard Frame

Wall bracket fixing.

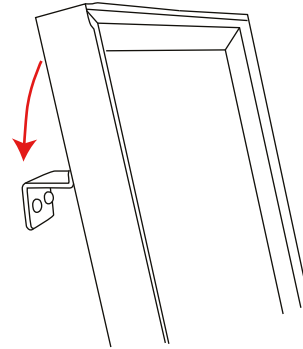
1



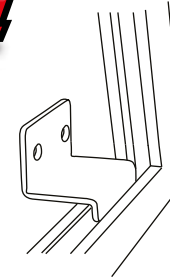
2



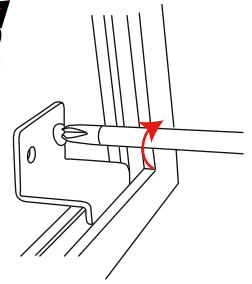
3



4



5



Attaching Graphic.

1

